



3 year guarantee Patented



ASAP

B71

(EN) Mobile fall arrester for rope
(FR) Antichute mobile sur corde
(DE) Mitlaufendes Auffanggerät für Seile
(IT) Anticaduta di tipo guidato su corda
(ES) Anticaídas deslizante para cuerda

CE 0082

EN 353-2:2002
EN 12841:2006 A

Individually tested

350 g

WARNING

Activities involving the use of this equipment are inherently dangerous. You are responsible for your own actions and decisions.

- Before using this equipment, you must:
- Read and understand all Instructions for Use.
 - Get specific training in its proper use.
 - Become acquainted with its capabilities and limitations.
 - Understand and accept the risks involved.



FAILURE TO HEED ANY OF THESE WARNINGS MAY RESULT IN SEVERE INJURY OR DEATH.

OK TRIACT LOCK M33 TL

CE 0082

EN 362:2004 class B
EN 12275:1998 type B

77 g

24 kN **OK!**

8 kN

7 kN

19 mm

(EN) Double autolocking carabiner
(FR) Mousqueton à double verrouillage automatique
(DE) Karabiner mit automatischem Verriegelungssystem
(IT) Moschettone a doppio bloccaggio automatico
(ES) Mosquetón de bloqueo doble automático



PRICE

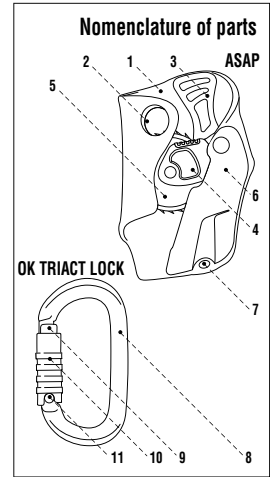
PETZL
ZI Cidex 105A
38920 Crolles
France
www.petzl.com/contact
ISO 9001
Copyright Petzl

www.petzl.com

Instructions for use
+ Product experience

Latest version
+ Other languages

B71-5000G (270410) recto



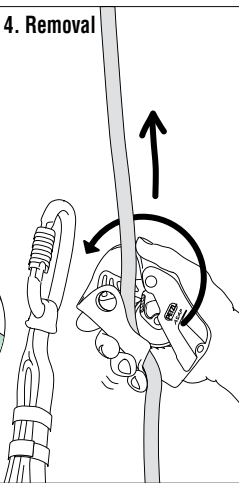
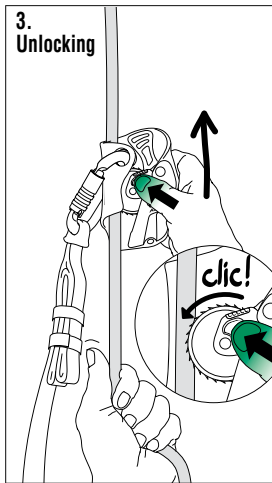
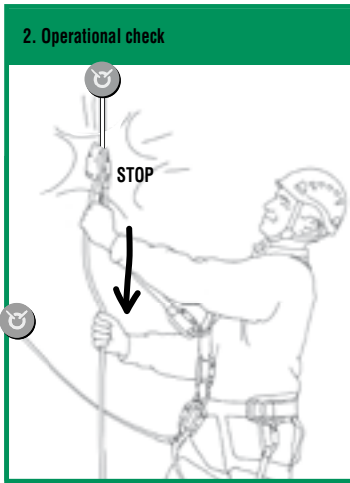
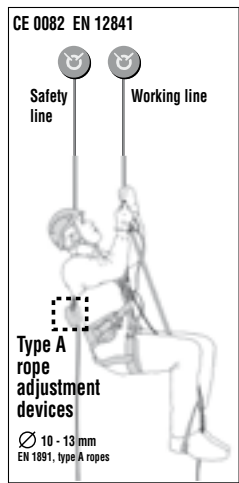
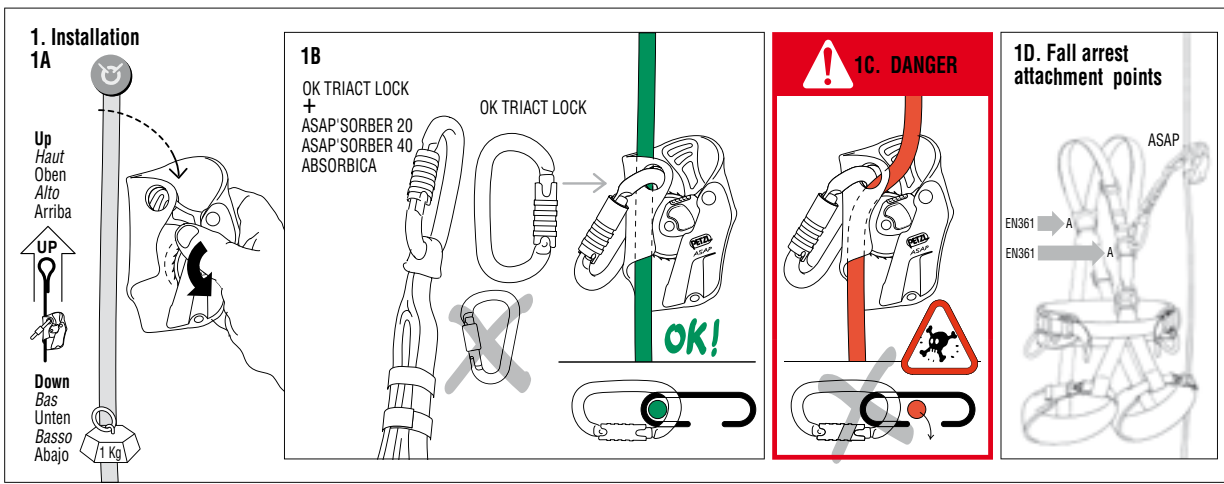
CE 0082 EN 353-2

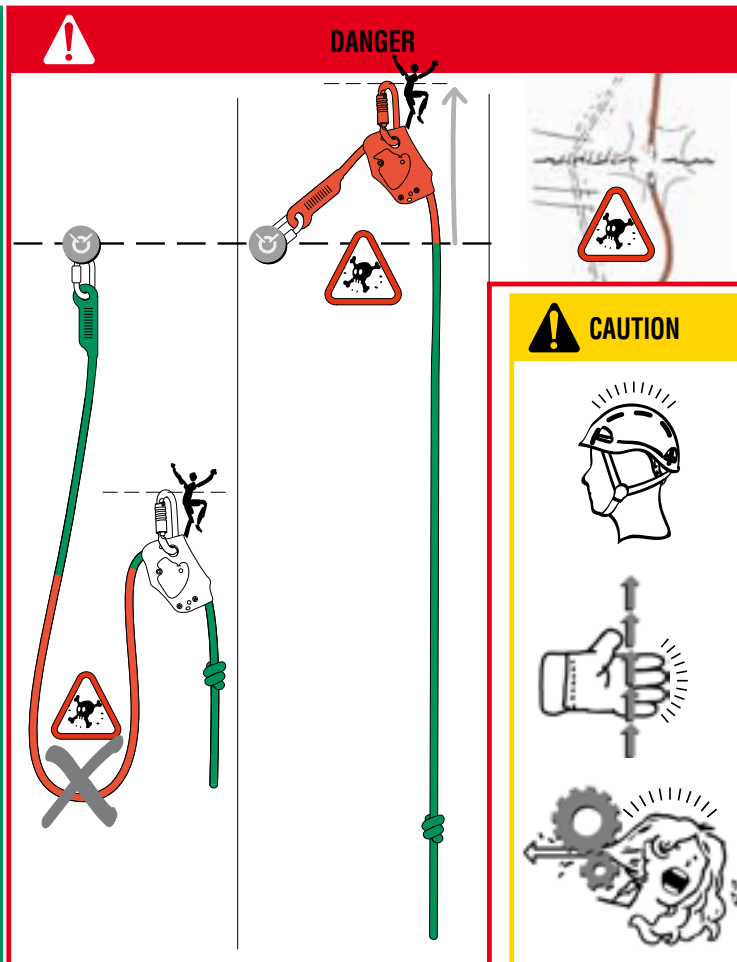
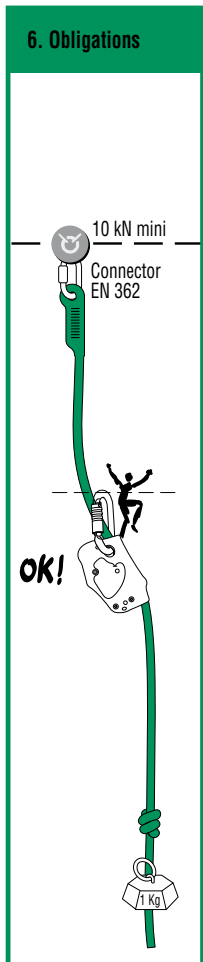
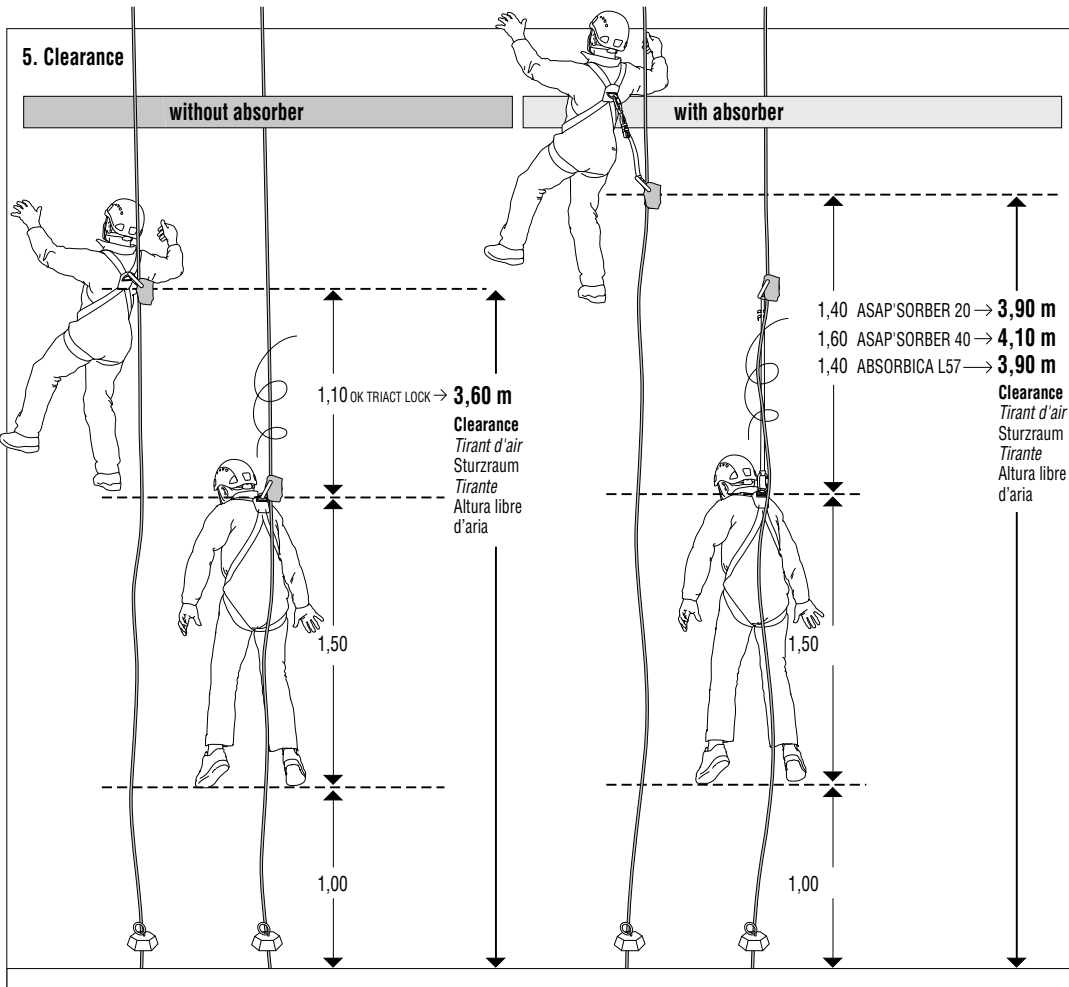
Parallel PETZL 10,5 mm
Axis PETZL 11 mm
Antipode BEAL 10,5 mm
Antipode / Industrie BEAL 11 mm
Rescue EDELWEISS 13 mm

www.petzl.com
10,5 ≤ Ø ≤ 13 mm
EN1891 A

EN 353-2
Requirement
Exigence
Anforderung
Requisiti
Exigencia

Minimum breaking strength of the rope with its termination
22 kN





CE 0082

CE 0082

EN 353-2 : 2002
guided type fall arresters
including a flexible
anchor line

EN 12841 : 2006: A
Personal fall
protection equipment -
Rope access
systems -
Rope adjustment
devices

10 - 13 mm
Max 100 kg

EN 1891, type A ropes

00 000 A 0000
00 000 0000

Year of manufacture
Année de fabrication
Herstellungsjahr
Anno di fabbricazione
Año de fabricación
Production date
Jour de fabrication
Tag der Herstellung
Giorno di fabbricazione
Dia de fabricación
Control
Incrementation

Up
Haut
Oben
Alto
Arriba

Notified body intervening for the CE type examination
Organisme notifié intervenant pour l'examen CE de type
Zertifizierungsorganisation für die CE-Typenüberprüfung
Ente riconosciuto che interviene per l'esame CE del tipo
Organismo notificado que interviene en el examen CE de tipo

APAVE SUD Europe BP 193,
13322 Marseille Cedex 16
N°0082

B715000G (270410) verso

